

RETAIL SPACE FOR LEASE

DORAL SHOPPES & PROFESSIONAL CENTER

1,704 S.F. & 1800 S.F.

NEC 107TH AVENUE & NW 36TH STREET, DORAL, FL



- **JOIN MIAMI CHILDREN'S HOSPITAL'S NEW 25,000 S.F. URGENT CARE FACILITY!!**
- **DISTINCTIVE ARCHITECTURE AND TOP QUALITY CONSTRUCTION**
- **GREAT EXPOSURE FRONTING 107TH AVENUE**
- **ACCESS FROM FLORIDA TURNPIKE, PALMETTO & DOLPHIN EXPRESSWAY**
- **DAILY TRAFFIC COUNT ON 107TH AVENUE – OVER 45,000**

	1 MILE	3 MILES	5 MILES
Population	15,206	79,962	262,960
Average Household Income	\$112,933	\$79,529	\$66,077
Median Age	33.9	34.4	37.3

SUCHMAN

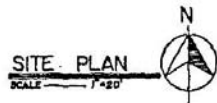
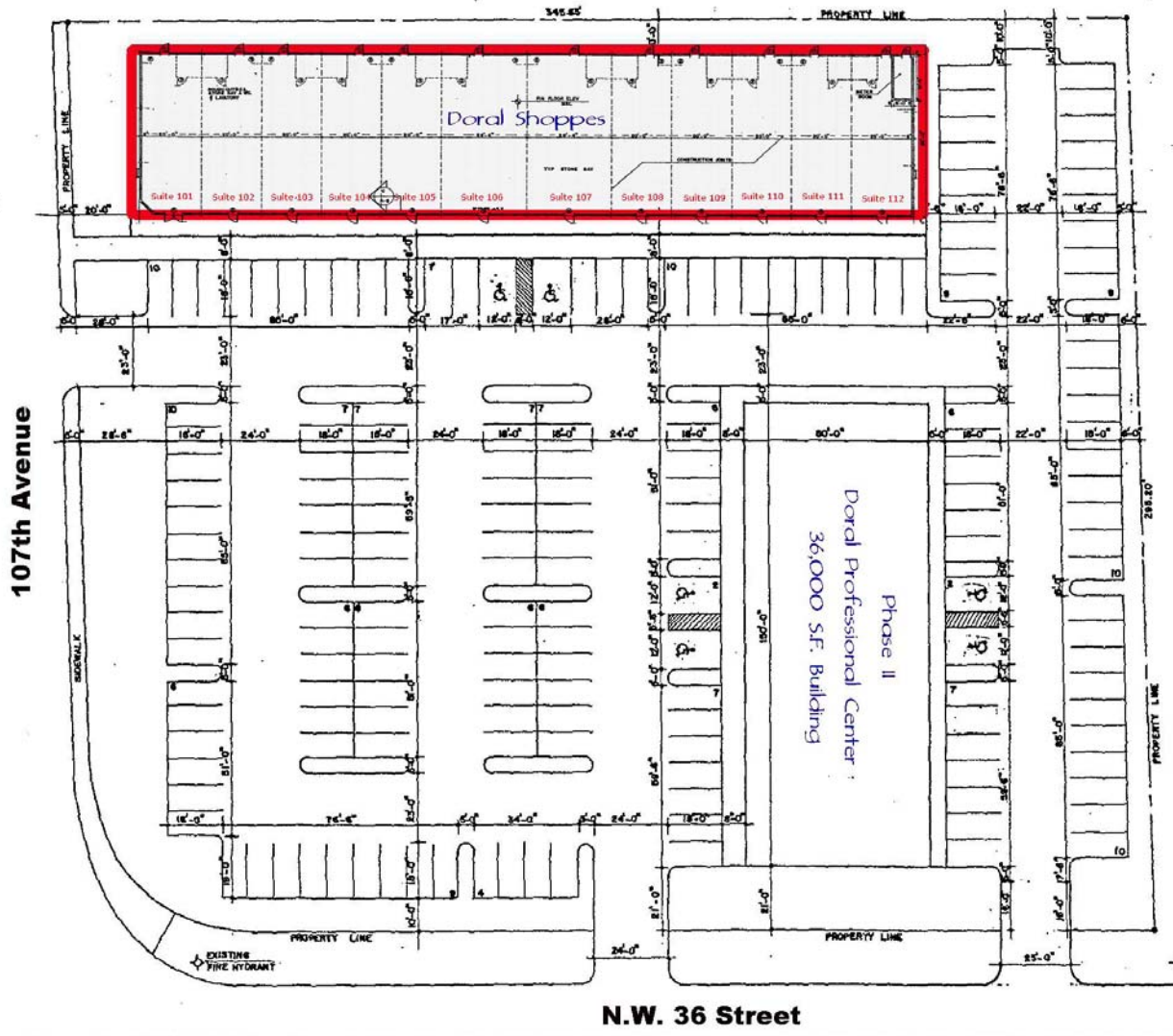
RETAIL GROUP, INC.
 LICENSED REAL ESTATE BROKER
 1550 Madruga Avenue, Suite 230
 Coral Gables, Florida 33146

Ana Vega-Garcia
 Director of Leasing
ana@suchmangroup.com
 305-667-6461 Ext. 11

Ray Blanco
 Senior Leasing Rep
ray@suchmangroup.com
 305-667-6461 Ext. 22

This offering is subject to errors, omission, and withdrawal from market, modification of terms and conditions or change of price without prior notice.

SITE PLAN



This offering is subject to errors, omission, and withdrawal from market, modification of terms and conditions or change of price without prior notice.